



John Leigh Park

Autumn Newsletter 2018

We Need Your Votes!

Photo: David Prior

Friends of John Leigh Park are seeking funding to brighten up the raised bed in the toddler play area with planting. As you can see from the photograph on the right, it's not attractive at the moment and is desperately in need of re-planting. Grant money would be used to buy plants. The volunteers would strip out and replant the bed and maintain the new planting scheme to make it a pleasant area for visitors to enjoy for years to come.



Skipton Building Society invited us to bid for one of their Grass Roots grants of £500 toward improvements to parks - They have 165 lots of £500 to give. We entered and have been shortlisted, but now need lots of votes by email to be in the top 165. Voting closes on the 12th October. To read our bid and vote for us, please go to:

<https://www.skiptongrg.co.uk/apply-for-funding/2018-shortlisted-groups/north-west/friends-of-john-leigh-park/> or vote at the Skipton branch.

The toddler play area is one of the most popular areas of the park as it's a gated area, so a secure and safe place for our youngest park visitors to play on the equipment. It also houses the aviary, which is a popular focal point. The addition of a picnic bench has meant that it has now become a favourite area for families wanting to eat al-fresco, or to sit while the children play. We feel that improving this raised bed with fresh planting will make the area bright and cheerful.



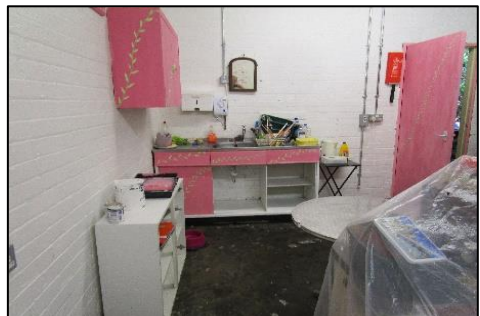
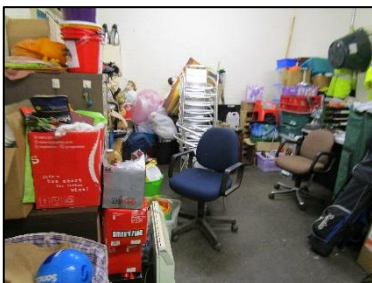


What A Result!

Work done over a one week period in July by the NCS Team 10 and the Friends of John Leigh Park has transformed the Yard and Mess Building. Take a look at these before and after photographs!



Outside – the yard had become overgrown with brambles, bind weed and accumulated green waste and stones. A skip, (later to be come 2 skips), was hired to take away the brambles and other unwanted materials. The team worked without power tools to clear the yard.



Inside – The main mess room had become cluttered and had not been decorated within memory. New homes were found for some of the stored items. Now it has been de-cluttered and re-decorated.

Congratulations to Team 10 – a truly amazing week and this will mean the yard and mess building will have more potential for good works. The Friends of John Leigh Park thank you all – students, supervisors, volunteers and organisers.



Music On The Park, Summer 2018

We enjoyed 3 fabulous sunny Sunday afternoons, being entertained by Stretford Band, and by bands on two Jamming On The Park afternoons. As well as great performances from 'Recycled' and 'Guys from the Old Market Tavern' we were wowed by 'Indecisive', a talented young local rock band, and gifted singer - songwriter Ben Williams. He was later joined by Jon Donohue, a multi-talented teacher, performer, and PA wiz.



A happy family enjoy the music. Neville, (nearest the camera), was head park keeper here for many years.



**John Leigh Park
Altrincham,
Monday 11.30 am**



- Effective and safe post-natal workout with experienced postnatal instructor.
- Burns fat, improves posture & strengthens core muscles.
- A total body workout combining cardio, strengthening and toning exercises
- Motivation to meet regularly to exercise.
- For all levels of fitness.
- Suitable for all buggies and pushchairs.
- It's fun and baby comes too!

Contact Emma Wilson-Dart:

getfit@emmawilsonfitness.co.uk

www.emmawilsonfitness.co.uk

www.facebook.com/buggyfitcheshire

Twitter @EmmaWFitness 07971596529



ALTRINCHAM METHODIST CHURCH MID WEEK ACTIVITIES INCLUDE:

**Parent & Toddler groups, Rainbows, Brownies,
Guides, Boys Brigade, Scouts and Cubs**

**Fun, Food and Fellowship on Wednesdays 12.30
to 1pm (for lunch), and lots more.**

Christmas Fayre Sat 24th November 10am to 2pm

Advent Craft Day 1st December 10am-2pm

**Our Coffee Bar is open during term time
Mon, Tues, Thurs & Fri 10am to 2pm
Everyone is welcome**

Rooms available to hire for children's parties

Our Sunday Services are 10.30 am & 6.30pm

Contact details:

Church office 0161 928 0022

Email: amc.office@btconnect.com

Or visit our website:

www.altrincham-methodist.org.uk

High quality, inspirational child care at affordable prices

Morning, afternoon and full day places available from September for 2, 3 and 4 year olds

Ofsted outstanding in all areas, July 2017

Qualified Early Years teacher

Free flow indoor/outdoor activity areas

Year round Forest School sessions with qualified leader



Address: St George's Playgroup
Church Walk, Altrincham
WA14 4TT

Tel: 07837273357

email:

st.georgesplaygroup@yahoo.co.uk

web:

www.stgeorgesplaygroup.org.uk



Devonshire Road Evangelical Church
Devonshire Road Broadheath

PRESENTS

Epiphany

an innovative group of professional Christian musicians will be performing a programme of light classics at the church on

Saturday 13th October at 7.00.pm

No charge - suggested donation £5 all proceeds to help the homeless and refugees

Refreshments served during interval

Further information from Sylvia on 0161 928 9364

Coming Soon!

Altrincham and District Schools Cross Country Running Events: 29th Sept, 13th Oct, 17th November. First race 10 am

Altrincham In Bloom – November

Carols in the Park – 16th December

Look out for:

New bins with a new layout – We believe it will work – please give yourselves time to get used to it

Trim Track – should soon be back as good as new. Funded by 106 monies from the Stamford Bowling Club site development

Still working on:

Hartley Road gateway renewal.

**BUDENBERG BOWLING & SOCIAL CLUB
CANAL SIDE, JUBILEE WAY,
BROADHEATH,**



**LOCAL SPORTS AND SOCIAL CLUB
IN PLEASANT SURROUNDINGS**

**Crown Green Bowling, Darts,
Live Entertainment**

Bingo every Wednesday 8pm Start

Room for Hire

For further information call

0161 928 1249.

Follow us on Facebook:

www.facebook.com/Budenberg-1

friendsofjohnleighpark@gmail.com
www.johnleighpark.org.uk

johnleighpark



Friends of John Leigh Park

@JohnLeighPark

